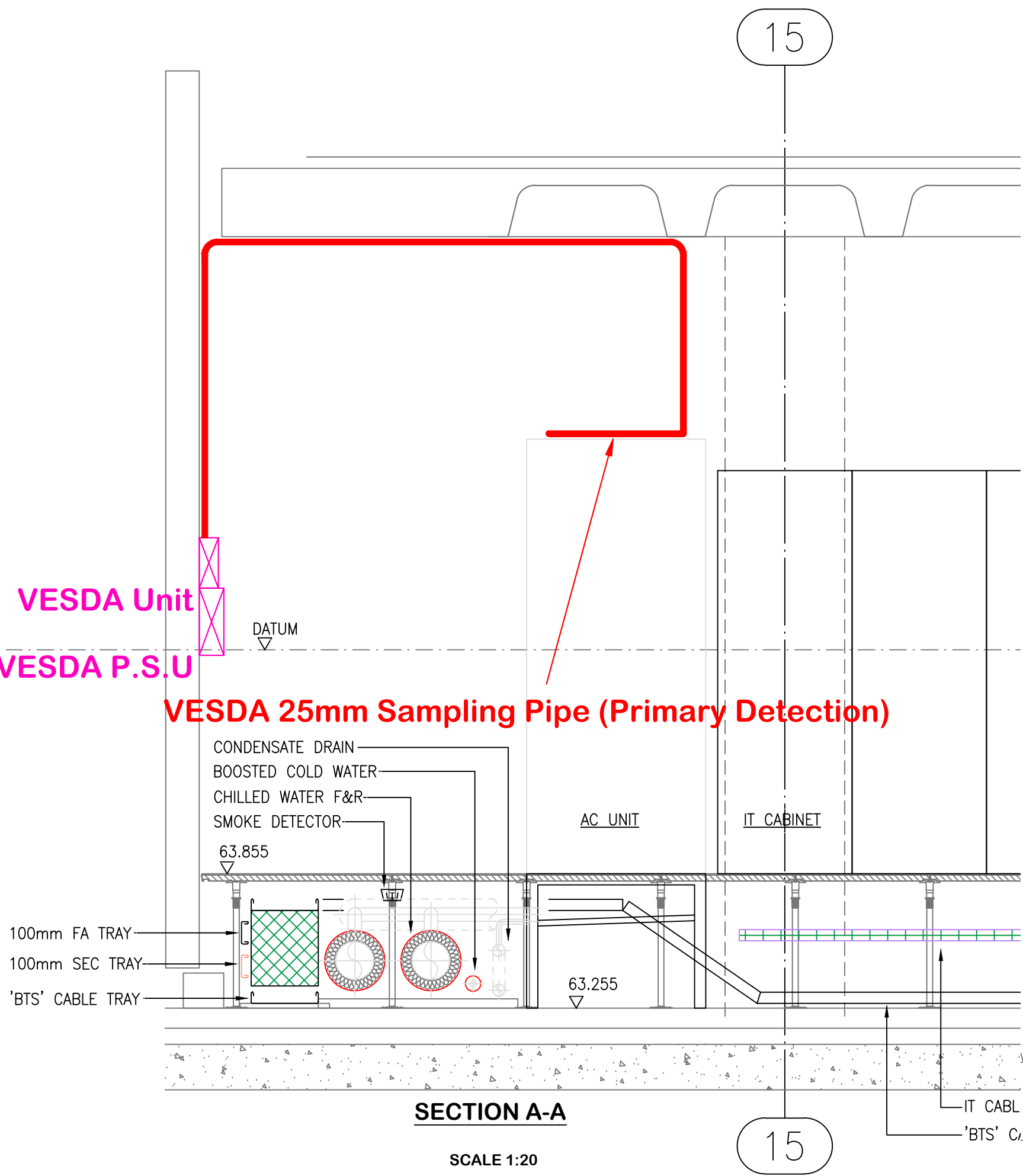
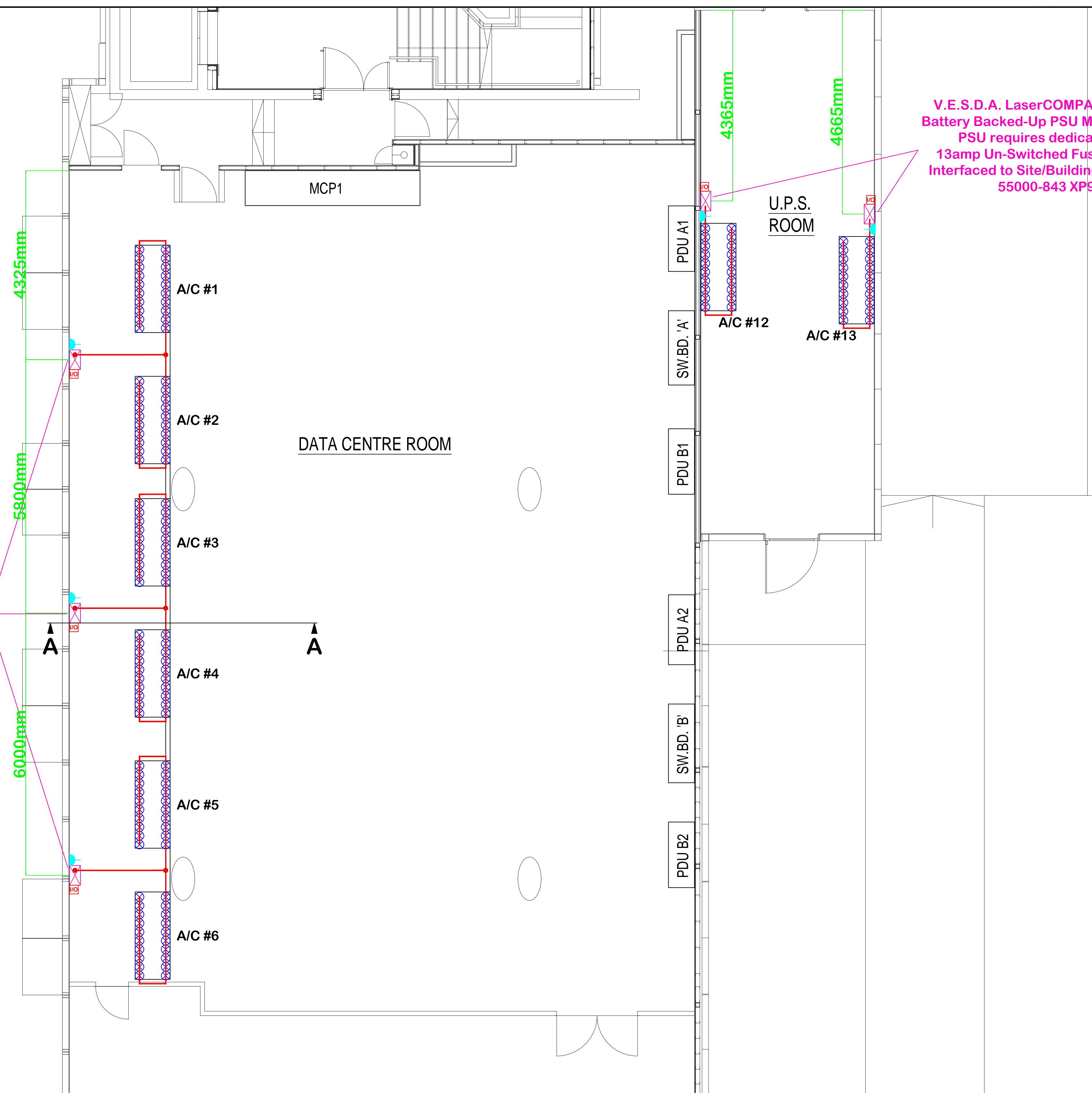


GENERAL NOTE:

POSITION OF V.E.S.D.A ASPIRATED DETECTION UNITS AND ASSOCIATED SAMPLING PIPE & PIPE RUNS CRITICAL AND TO BE POSITIONED AS SHOWN ON THIS DRAWING TO MEET COMPLIANCE WITH BOTH BS5839:PART 1:2002 & BS6266:2002



V.E.S.D.A. LaserCOMPACT Aspirated Detection Unit
c/w Battery Backed-Up PSU Mounted 1500mm FFL to top of unit.
PSU requires dedicated 230vac Mains Supply via
13amp Un-Switched Fused Spur to BS5839:Part 1:2002.
Interfaced to Site/Building Fire Alarm System using Apollo
55000-843 XP95 Switch Monitor Unit.



V.E.S.D.A. LaserCOMPACT Aspirated Detection Unit c/w
Battery Backed-Up PSU Mounted 1500mm FFL to top of unit.
PSU requires dedicated 230vac Mains Supply via
13amp Un-Switched Fused Spur to BS5839:Part 1:2002.
Interfaced to Site/Building Fire Alarm System using Apollo
55000-843 XP95 Switch Monitor Unit.

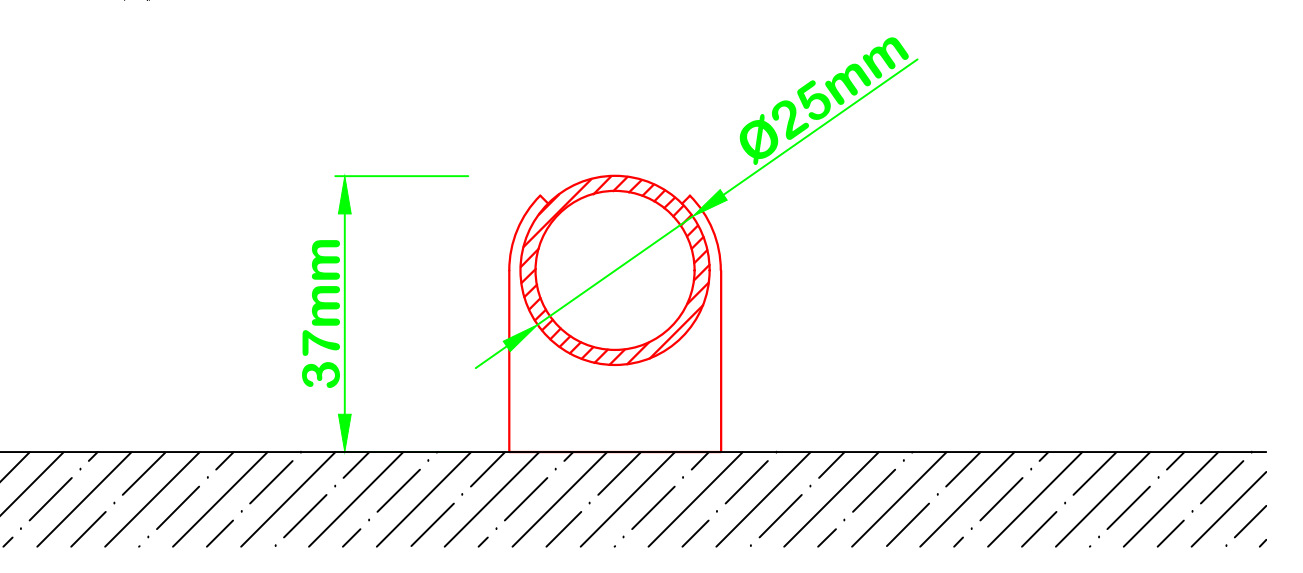
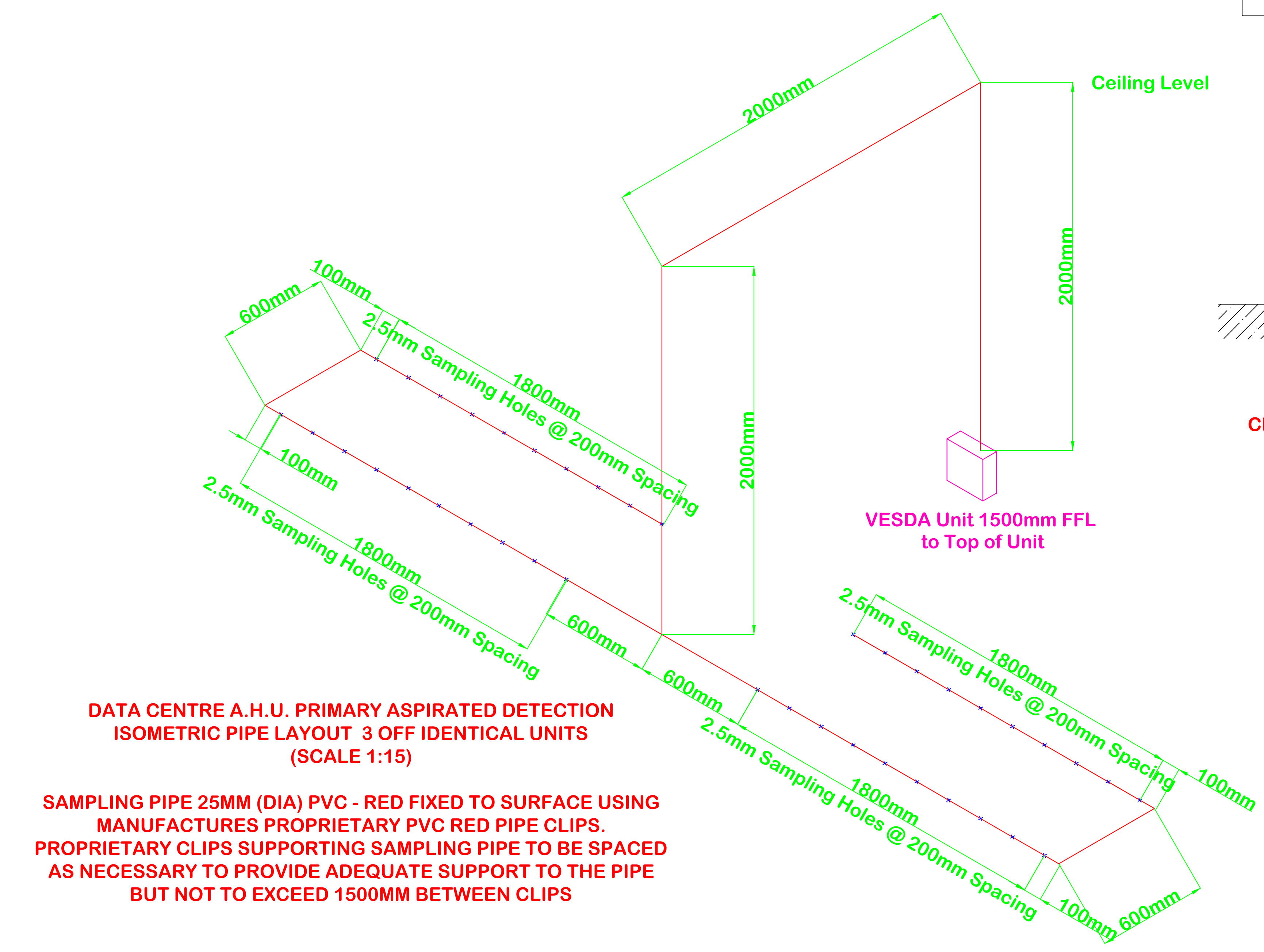
ALL DIMENSIONS ARE IN MILLIMETRES UNLESS OTHERWISE STATED
DO NOT SCALE FROM THIS DRAWING

NOTES:

LEGEND

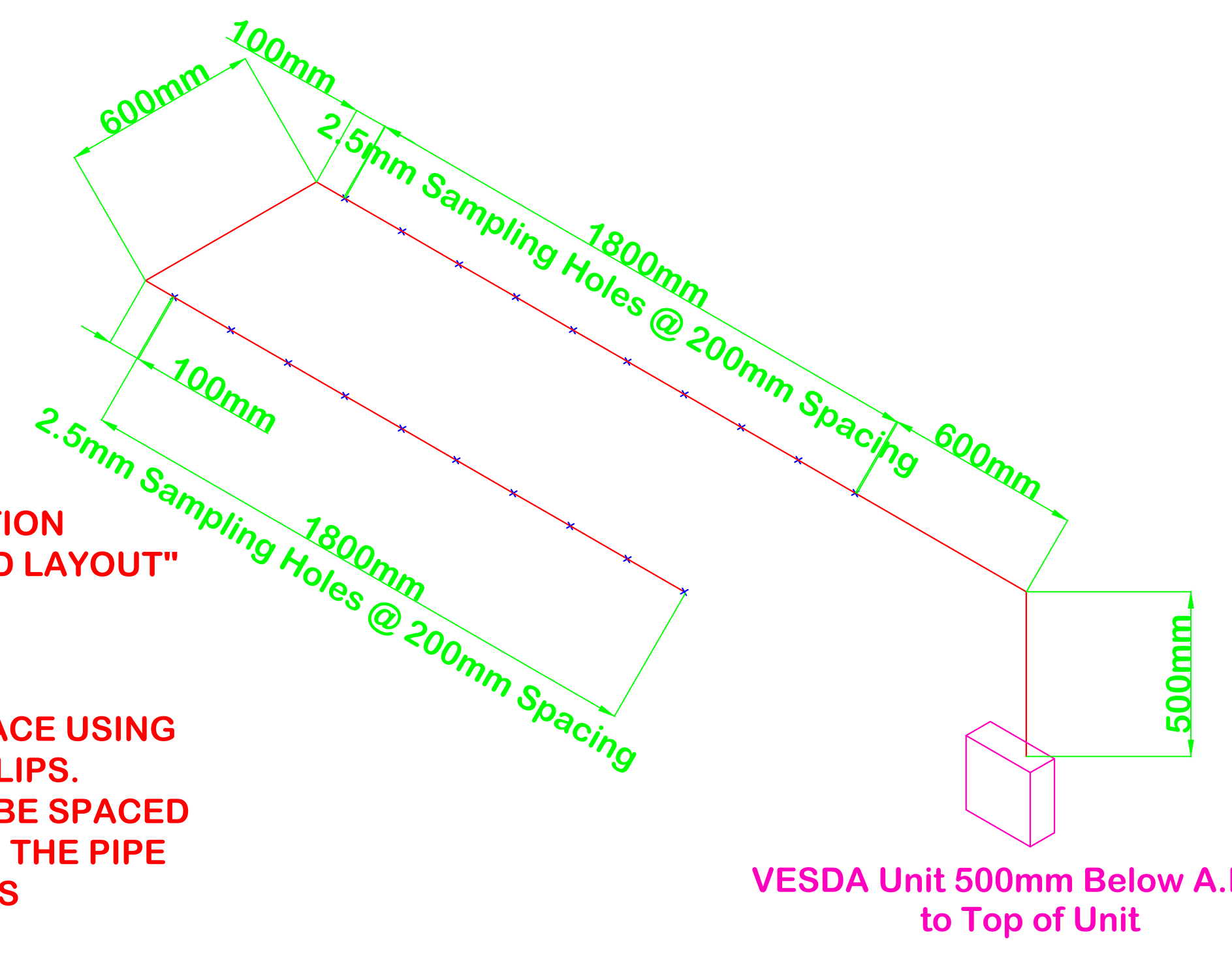
- VESDA Aspirating Detection Unit
- VESDA 25mm (DIA) Aspirating Sampling Pipe
- VESDA Aspirating Sample Point (Hole)
- Fire Alarm Interface
- 13amp Un-Switched Spur
- Building Fire Alarm Sounder/Beacon

Revision	Description	Date	Checked
AMENDMENT RECORD			
 DESIGN & DRAFTING SERVICES 4 HERMITAGE CLOSE THREE LEGGED CROSS WIMBORNE DORSET BH21 8GA Tel: 01935 742300 Email: autocad_drawings@lifesystems.com			
Project: Asburton Court (West) Castle Complex Winchester Hampshire			
Title: Proposed Data Centre & UPS Room Aspirated (VESDA) Detection Primary Detection to A/C Units PLAN & ISOMETRIC PIPE LAYOUTS			
Drawn By:	ISW	Date:	OCT 08
Checked By:		Date:	
Scale @ AD:	1:50	Date:	OCT 08
Drawing Number:	SAMPLE/2008/10/VE01		
Revision:			



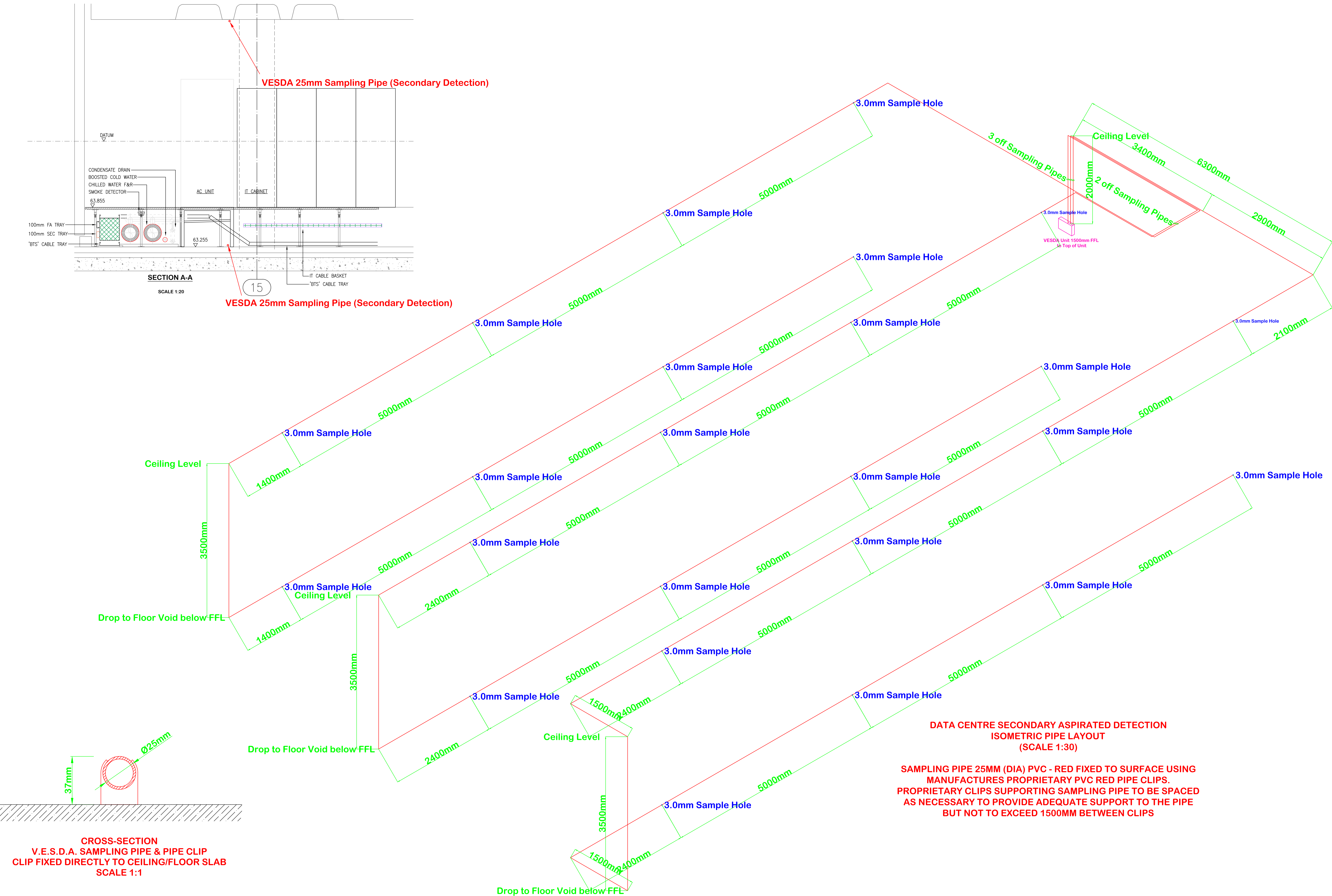
UPS ROOM A.H.U. PRIMARY ASPIRATED DETECTION
ISOMETRIC PIPE LAYOUT 2 OFF IDENTICAL "MIRRORED LAYOUT"
UNITS
(SCALE 1:15)

SAMPLING PIPE 25MM (DIA) PVC - RED FIXED TO SURFACE USING
MANUFACTURES PROPRIETARY PVC RED PIPE CLIPS.
PROPRIETARY CLIPS SUPPORTING SAMPLING PIPE TO BE SPACED
AS NECESSARY TO PROVIDE ADEQUATE SUPPORT TO THE PIPE
BUT NOT TO EXCEED 1500MM BETWEEN CLIPS



GENERAL NOTE:

POSITION OF V.E.S.D.A ASPIRATED DETECTION UNITS AND ASSOCIATED SAMPLING PIPE & PIPE RUNS CRITICAL AND TO BE POSITIONED AS SHOWN ON THIS DRAWING TO MEET COMPLIANCE WITH BOTH BS5839:PART 1:2002 & BS6266:2002



ALL DIMENSIONS ARE IN MILLIMETRES UNLESS OTHERWISE STATED
DO NOT SCALE FROM THIS DRAWING

A0

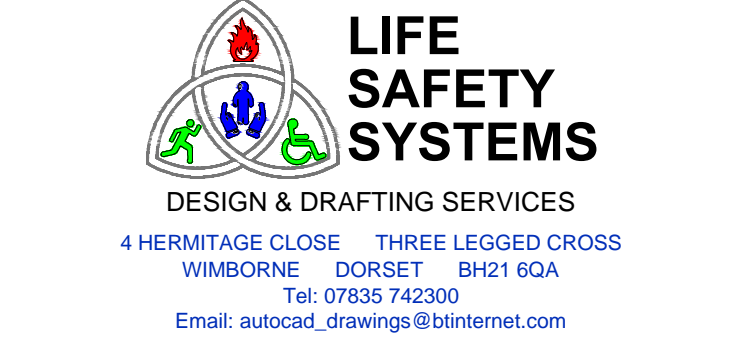
NOTES:

LEGEND

- VESDA Aspirating Detection Unit
- VESDA 25mm (DIA) Aspirating Sampling Pipe
- VESDA Aspirating Sample Point (Hole)
- Fire Alarm Interface
- 13amp Un-Switched Spur
- Building Fire Alarm Sounder/Beacon

Revision	Description	Date	Checked
----------	-------------	------	---------

AMENDMENT RECORD



Project:
Asburton Court (West)
Castle Complex
Winchester
Hampshire

Title:
Proposed
Data Centre & UPS Room
Aspirated (VESDA) Detection
Secondary Detection
ROOM & FLOOR VOID
ISOMETRIC PIPE LAYOUTS

Drawn By: ISW Date: OCT 08

Checked By: Date:

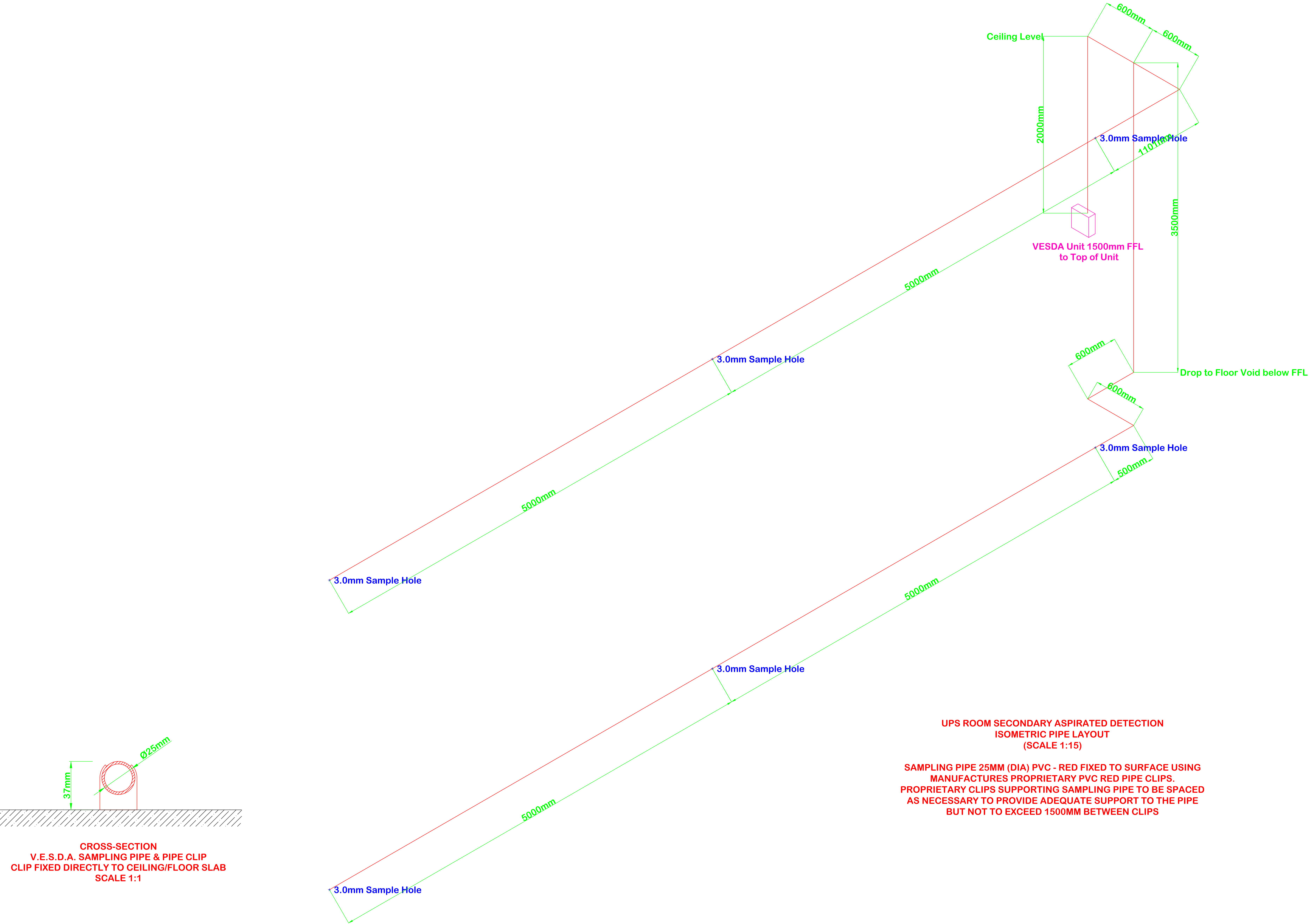
Scale @ AD: 1:30 Date: OCT 08

Drawing Number:
SAMPLE/2008/10/VE02

Revision:

GENERAL NOTE:

POSITION OF V.E.S.D.A ASPIRATED DETECTION UNITS AND ASSOCIATED SAMPLING PIPE & PIPE RUNS CRITICAL AND TO BE POSITIONED AS SHOWN ON THIS DRAWING TO MEET COMPLIANCE WITH BOTH BS5839:PART 1:2002 & BS6266:2002



UPS ROOM SECONDARY ASPIRATED DETECTION
ISOMETRIC PIPE LAYOUT
(SCALE 1:15)

SAMPLING PIPE 25MM (DIA) PVC - RED FIXED TO SURFACE USING MANUFACTURES PROPRIETARY PVC RED PIPE CLIPS. PROPRIETARY CLIPS SUPPORTING SAMPLING PIPE TO BE SPACED AS NECESSARY TO PROVIDE ADEQUATE SUPPORT TO THE PIPE BUT NOT TO EXCEED 1500MM BETWEEN CLIPS

CROSS-SECTION
V.E.S.D.A. SAMPLING PIPE & PIPE CLIP
CLIP FIXED DIRECTLY TO CEILING/FLOOR SLAB
SCALE 1:1

ALL DIMENSIONS ARE IN MILLIMETRES UNLESS OTHERWISE STATED
DO NOT SCALE FROM THIS DRAWING

© The drawing and/or design is the property of LIFE SAFETY SYSTEMS and shall not be reproduced or copied in that whole or part in any way or conveyed to a third party without the owner's written permission.

NOTES:

LEGEND

- VESDA Aspirating Detection Unit
- VESDA 25mm (DIA) Aspirating Sampling Pipe
- VESDA Aspirating Sample Point (Hole)
- Fire Alarm Interface
- 13amp Un-Switched Spur
- Building Fire Alarm Sounder/Beacon

Revision	Description	Date	Checked
----------	-------------	------	---------

AMENDMENT RECORD

LIFE SAFETY SYSTEMS
DESIGN & DRAFTING SERVICES
4 HERMITAGE CLOSE WIMBORNE DORSET BH21 6GA
Tel: 01935 742300
Email: autocad_drawings@lifesystems.com

Project:
Asburton Court (West)
Castle Complex
Winchester
Hampshire

Title:
Proposed
Data Centre & UPS Room
Aspirated (VESDA) Detection
Secondary Detection
UPS ROOM & FLOOR VOID
ISOMETRIC PIPE LAYOUTS

Drawn By: ISW Date: OCT 08

Checked By: Date:

Scale @ AD: 1:15 Date: OCT 08

Drawing Number:
SAMPLE/2008/10/VE03

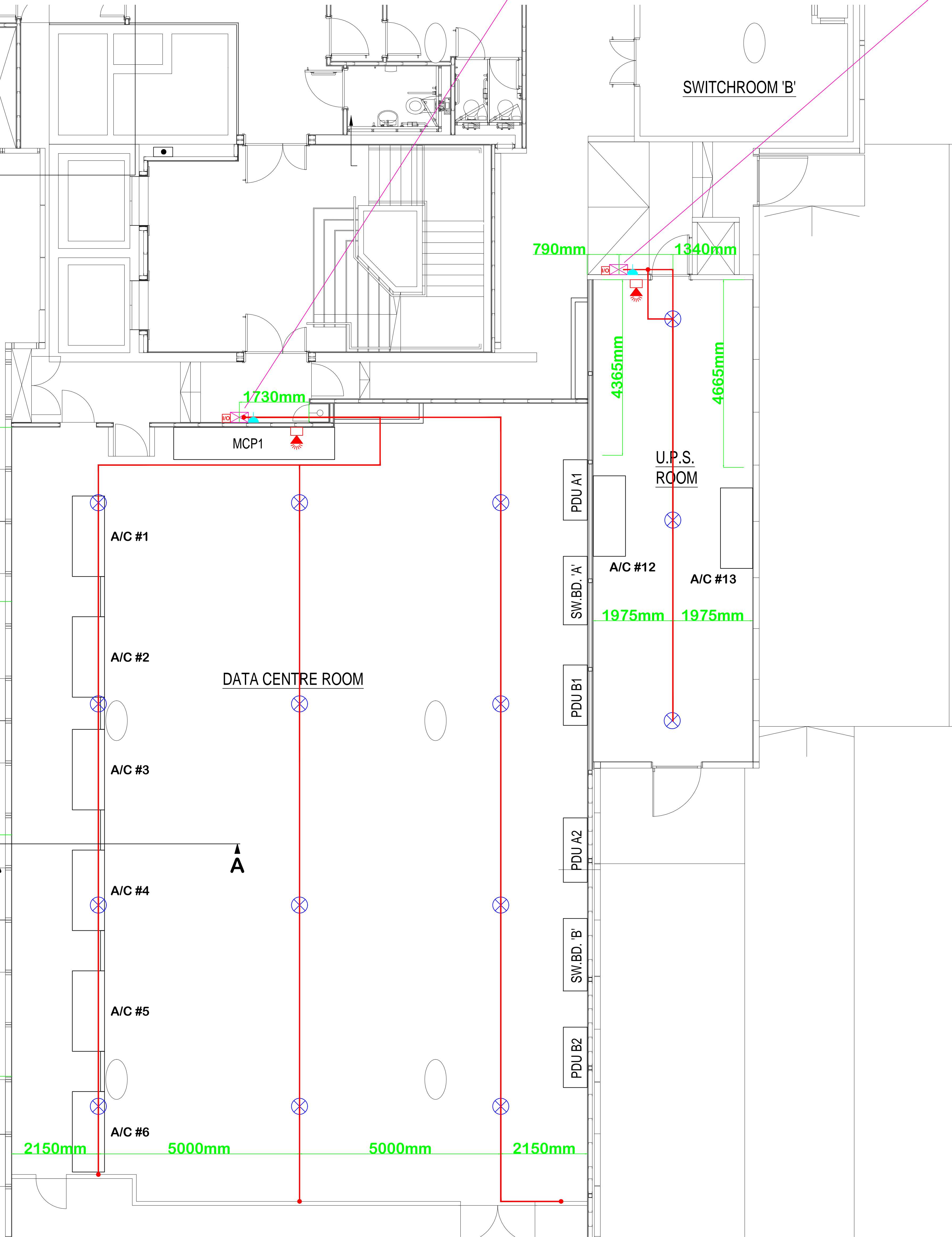
Revision							
----------	--	--	--	--	--	--	--

GENERAL NOTE:

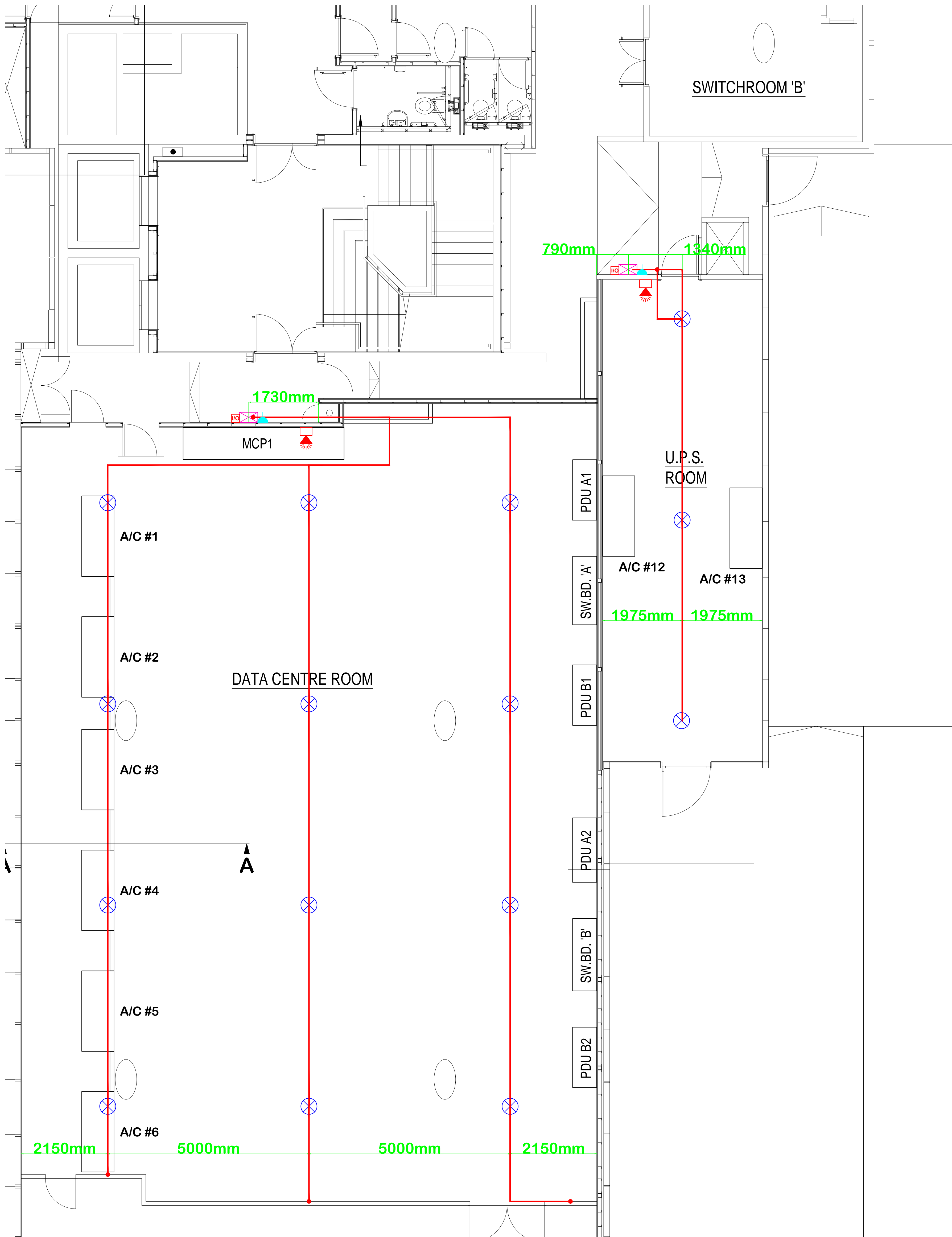
POSITION OF V.E.S.D.A ASPIRATED DETECTION UNITS AND ASSOCIATED SAMPLING PIPE & PIPE RUNS CRITICAL AND TO BE POSITIONED AS SHOWN ON THIS DRAWING TO MEET COMPLIANCE WITH BOTH BS5839:PART 1:2002 & BS6266:2002

V.E.S.D.A. LaserPLUS Aspirated Detection Unit c/w Battery Backed-Up PSU Mounted 1500mm FFL to top of unit.
PSU requires dedicated 230vac Mains Supply via 13amp Un-Switched Fused Spur to BS5839:Part 1:2002.
Interfaced to Site/Building Fire Alarm System using Apollo 55000-843 XP95 Switch Monitor Unit.

V.E.S.D.A. LaserCOMPACT Aspirated Detection Unit c/w Battery Backed-Up PSU Mounted 1500mm FFL to top of unit.
PSU requires dedicated 230vac Mains Supply via 13amp Un-Switched Fused Spur to BS5839:Part 1:2002.
Interfaced to Site/Building Fire Alarm System using Apollo 55000-843 XP95 Switch Monitor Unit.



Room Detection (High Level)



Floor Void Detection (Low Level)


ALL DIMENSIONS ARE IN MILLIMETRES UNLESS OTHERWISE STATED
DO NOT SCALE FROM THIS DRAWING

A0

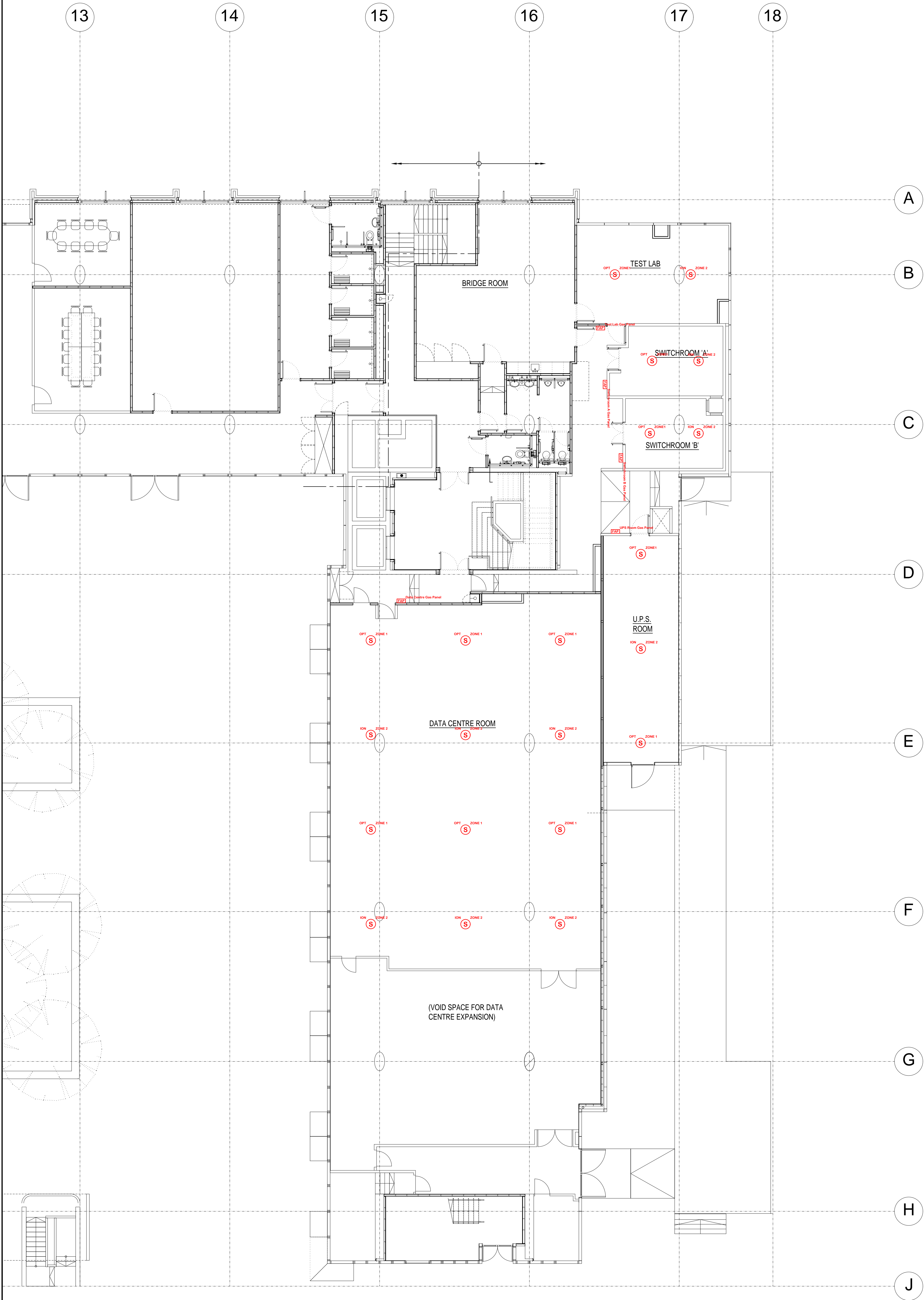
NOTES:

LEGEND

- VESDA Aspirating Detection Unit
- VESDA 25mm (DIA) Aspirating Sampling Pipe
- VESDA Aspirating Sample Point (Hole)
- Fire Alarm Interface
- 13amp Un-Switched Spur
- Building Fire Alarm Sounder/Beacon

Revision	Description	Date	Checked
AMENDMENT RECORD			
<div><div>LIFE SAFETY SYSTEMS DESIGN & DRAFTING SERVICES 4 HERMITAGE CLOSE THREE LEGGED CROSS WIMBORNE DORSET BH21 6GA Tel: 01935 742300 Email: autocad_drawings@btinternet.com</div></div>			
Project:			
Asburton Court (West) Castle Complex Winchester Hampshire			
Title:			
Proposed Data Centre & UPS Room Aspirated (VESDA) Detection			
Secondary Detection ROOM & FLOOR VOID PLAN LAYOUTS			
Drawn By:		Date:	
ISW		OCT 08	
Checked By:		Date:	
Scale @ A0:		Date:	
1:30		OCT 08	
Drawing Number:			
SAMPLE/2008/10/VE04			
Revision:			

- Fire Alarm
- [FAP] Indicator Control Panel
 - [RFAP] Repeater Indicator Control Panel
 - [S] Smoke Detector/Sensor
 - [H] Heat Detector/Sensor
 - [SH] Combined Smoke/Heat Detector/Sensor
 - [SMB] Detector/Sensor Mounted Base Sounder
 - [SMB] Detector/Sensor Base Sounder/Beacon
 - [MCP] Manual Call Point
 - [AS] Alarm Sounder
 - [CSB] Combined Sounder/Beacon
 - [B] Beacon
 - [AB] Alarm Bell
 - [R] Sensor/Detector Remote Visual Indicator
 - [I] Interface (Letter Denotes Type)
 - [M] Miscellaneous Unit/Interface
 - [BTU] Beam Detector Transmitter Unit
 - [BRU] Beam Detector Receiver Unit



ROOM DETECTION



FLOOR VOID DETECTION

NOTES:



4 HERMITAGE CLOSE
THREE LEGGED CROSS
WIMBORNE
DORSET
BH21 1QA
Tel: 07835 742300
Email: autocad_drawings@lifesystems.com

Revision	Description	Date	Checked

Project:
Ashburton Court (West)
Castle Complex
Winchester
Hampshire

Title:
Proposed
Data Centre & Adjoining Rooms
Gas Discharge Automatic
Detection Layouts
ROOM AREA & FLOOR VOIDS

Drawn By:

ISW

Date:

DEC 08

Checked By:

Date:

Scale @ A0:

1:100

Date:

DEC08

© This drawing and/or design is the property of LIFE SAFETY SYSTEMS and shall not be reproduced or copied in the whole or part in any way or conveyed to a third party without the owners written permission.

Drawing Number:

SAMPLE/2008/12/GD01

Revision: