

© This drawing and/or design is the property of 'LIFE SAFETY SYSTEMS' and shall not be reproduced or copied in the whole or part in any way or conveyed to a third party without the owners written permission.

NOTES:

Fire Alarm

**FAP** Indicator Control Panel

**RFAP** Repeater Indicator Control Panel

**S** Smoke Detector/Sensor

**H** Heat Detector/Sensor

**S/H** Combined Smoke/Heat Detector/Sensor

**○** Detector/Sensor Mounted Base Sounder

**●** Manual Call Point

**▽** Alarm Sounder

**⬆** Combined Sounder/Visual Indicator Unit

**☀** Visual Indicator Unit

**⬆** Alarm Bell

**R** Sensor/Detector Remote Visual Indicator

**?** Interface (Letter Denotes Type)

**⊗** Miscellaneous Unit/Interface

**↑Tx** Beam Detector Transmitter Unit

**↓Rx** Beam Detector Receiver Unit

Revision	Description	Date	Checked

AMENDMENT RECORD



DESIGN & DRAFTING SERVICES

4 HERMITAGE CLOSE THREE LEGGED CROSS  
WIMBORNE DORSET BH21 6QA  
Tel: 07835 742200  
Email: autocad\_drawings@btinternet.com

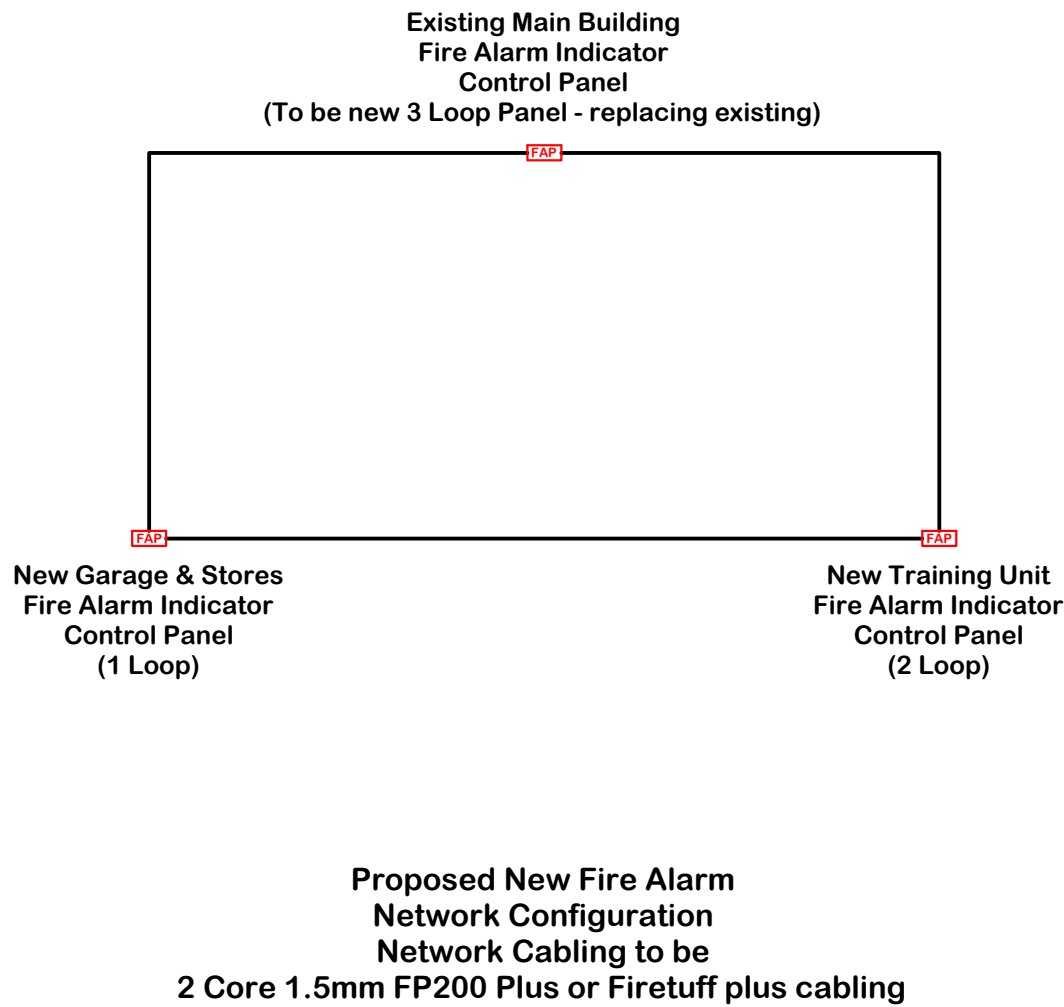
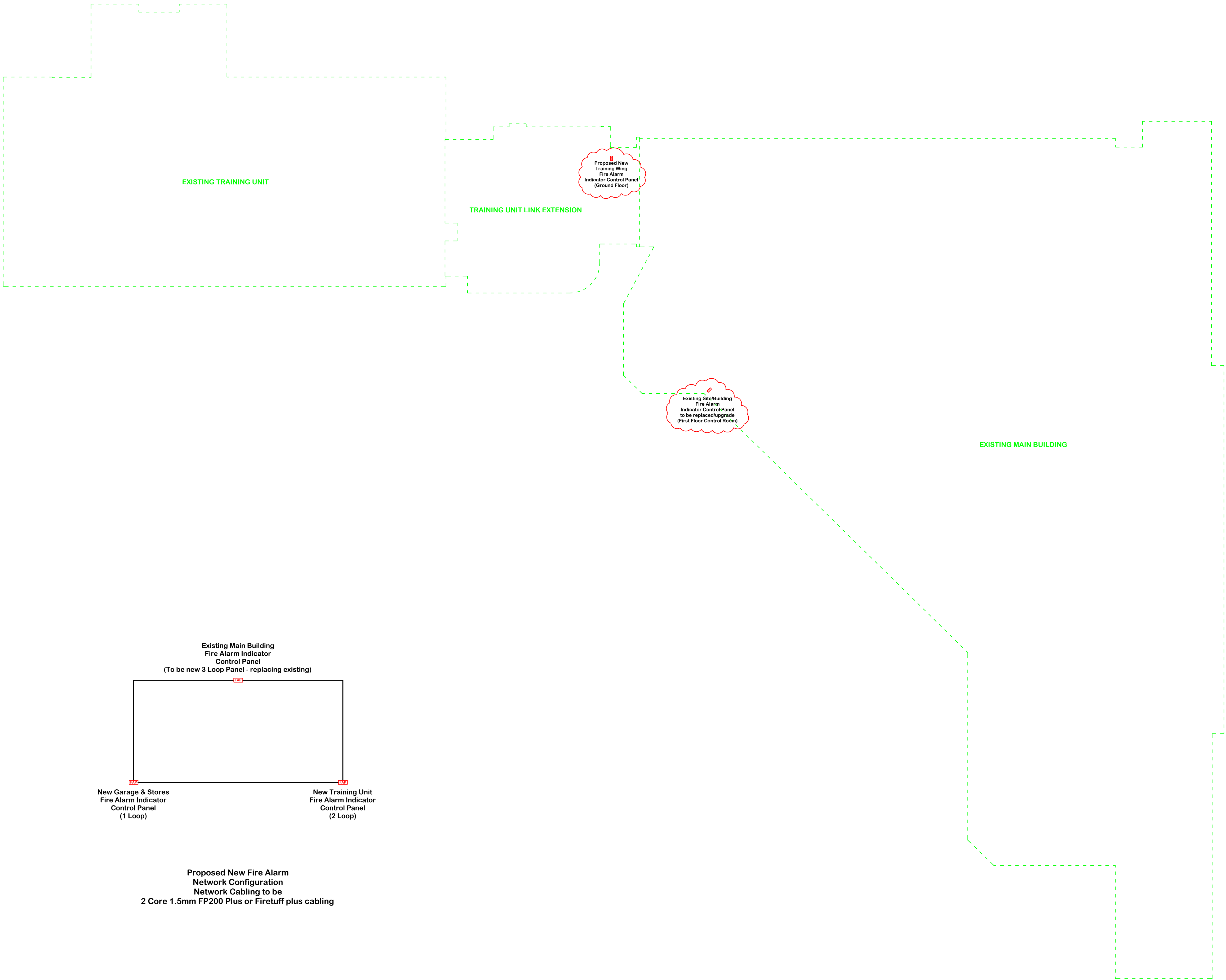
Project:

Hampshire Fire & Rescue HQ  
Leigh Road  
Eastleigh  
Hampshire

Title:

Proposed  
Fire Alarm Alterations & Upgrade  
General Overview & Schematic

Drawn By:	ISW	Date:	JULY 05
Checked By:		Date:	
Scale @ A1:	1:100	Date:	JULY 05
Drawing Number:	SAMPLE/2005/07/FA001		
Revision:			



**NOTES:**

## Fire Alarm

## FAP Indicator Control Panel

## RFAP Repeater Indicator Control Panel

**(S) Smoke Detector/Sensor**

**(H) Heat Detector/Sensor**

 **Combined Smoke/Heat Detector/Sensor**

 **Detector/Sensor Mounted Base Sounder**

 **Manual Call Point**

 **Alarm Sounder** **Combined Sounder/Visual Indicator Unit**
**Visual Indicator Unit** Alarm Bell

**R** Sensor/Detector Remote Visual Indicator

**?** Interface (Letter Denotes Type)

 **Miscellaneous Unit/Interface**

**Tx** Beam Detector Transmitter Unit

 Beam Detector Receiver Unit



Revision	Description	Date	Checked
----------	-------------	------	---------

## AMENDMENT RECORD



# LIFE SAFETY SYSTEMS

## DESIGN & DRAFTING SERVICES

4 HERMITAGE CLOSE      THREE LEGGED CROSS

WIMBORNE DORSET I

Email: [autocad\\_drawings@btinternet.com](mailto:autocad_drawings@btinternet.com)

**Project:**

**Hampshire Fire & Rescue HQ**  
**Leigh Road**  
**Eastleigh**  
**Hampshire**

**Title:**

# Proposed Fire Alarm Alterations & Upgrade New Training Unit Building

## GROUND & FIRST FLOORS

Drawn By:

ISW

**Checked By:**

**Scale @ A1:**

**1:100**

Drawing Number:

**SAMPLE/2005/07/FA100**

**Revision:**

--	--	--	--	--	--	--	--

© This drawing and/or design is the property of 'LIFE SAFETY SYSTEMS' and shall not be reproduced or copied in the whole or part in any way or conveyed to a third party without the owners written permission.

NOTES:

Fire Alarm

[FAP] Indicator Control Panel

[RFAP] Repeater Indicator Control Panel

[S] Smoke Detector/Sensor

[H] Heat Detector/Sensor

[S/H] Combined Smoke/Heat Detector/Sensor

[ ] Detector/Sensor Mounted Base Sounder

[ ] Manual Call Point

[ ] Alarm Sounder

[ ] Combined Sounder/Visual Indicator Unit

[ ] Visual Indicator Unit

[ ] Alarm Bell

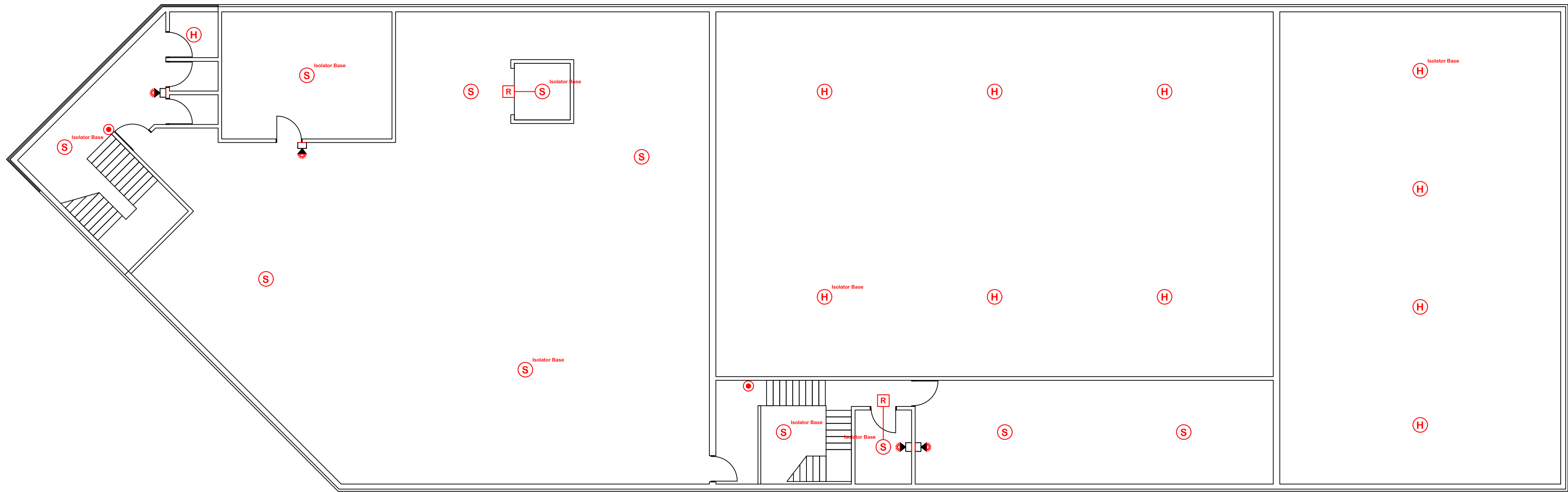
[R] Sensor/Detector Remote Visual Indicator

[?] Interface (Letter Denotes Type)

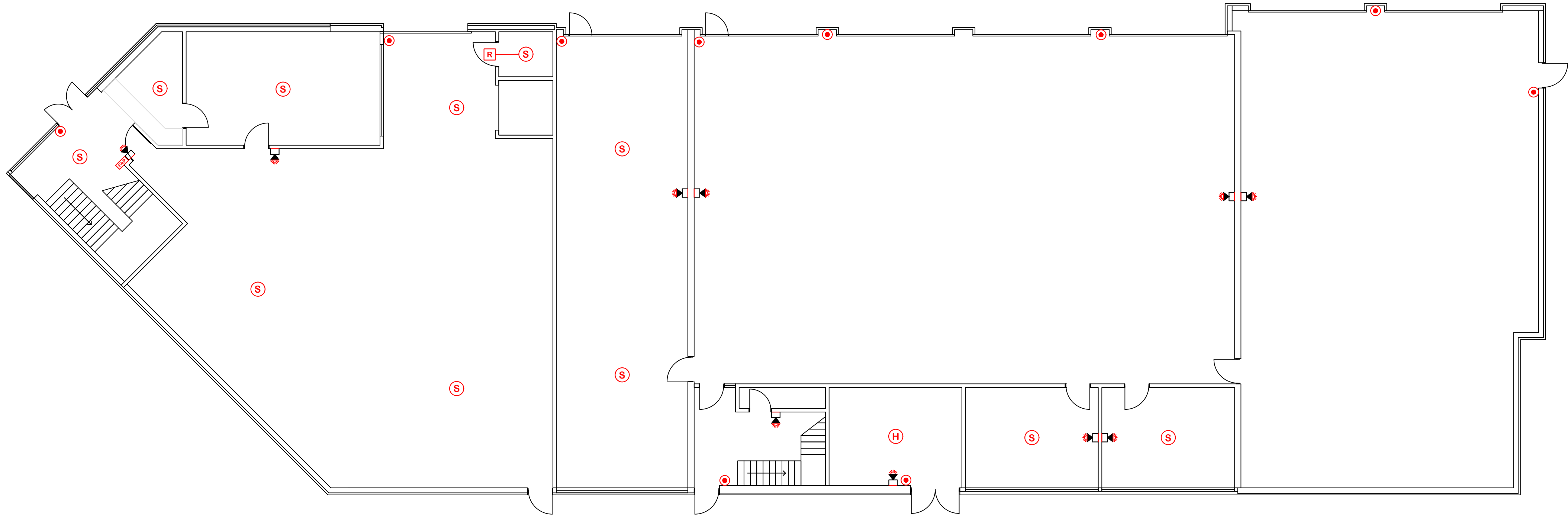
[X] Miscellaneous Unit/Interface

[Tx] Beam Detector Transmitter Unit

[Rx] Beam Detector Receiver Unit



FIRST FLOOR



GROUND FLOOR

Revision	Description	Date	Checked
----------	-------------	------	---------

AMENDMENT RECORD



DESIGN & DRAFTING SERVICES

4 HERMITAGE CLOSE THREE LEGGED CROSS  
WIMBORNE DORSET BH21 6QA  
Tel: 07835 742200  
Email: autocad\_drawings@btinternet.com

Project:

Hampshire FGire & Rescue HQ  
Leigh Road  
Eastleigh  
Hampshire

Title:

Proposed  
Fire Alarm Alterations & Upgrade  
New Garage & Stores Building

GROUND & FIRST FLOORS

Drawn By: ISW Date: JULY 05

Checked By: Date:

Scale @ A1: 1:100 Date: JULY 05

Drawing Number:

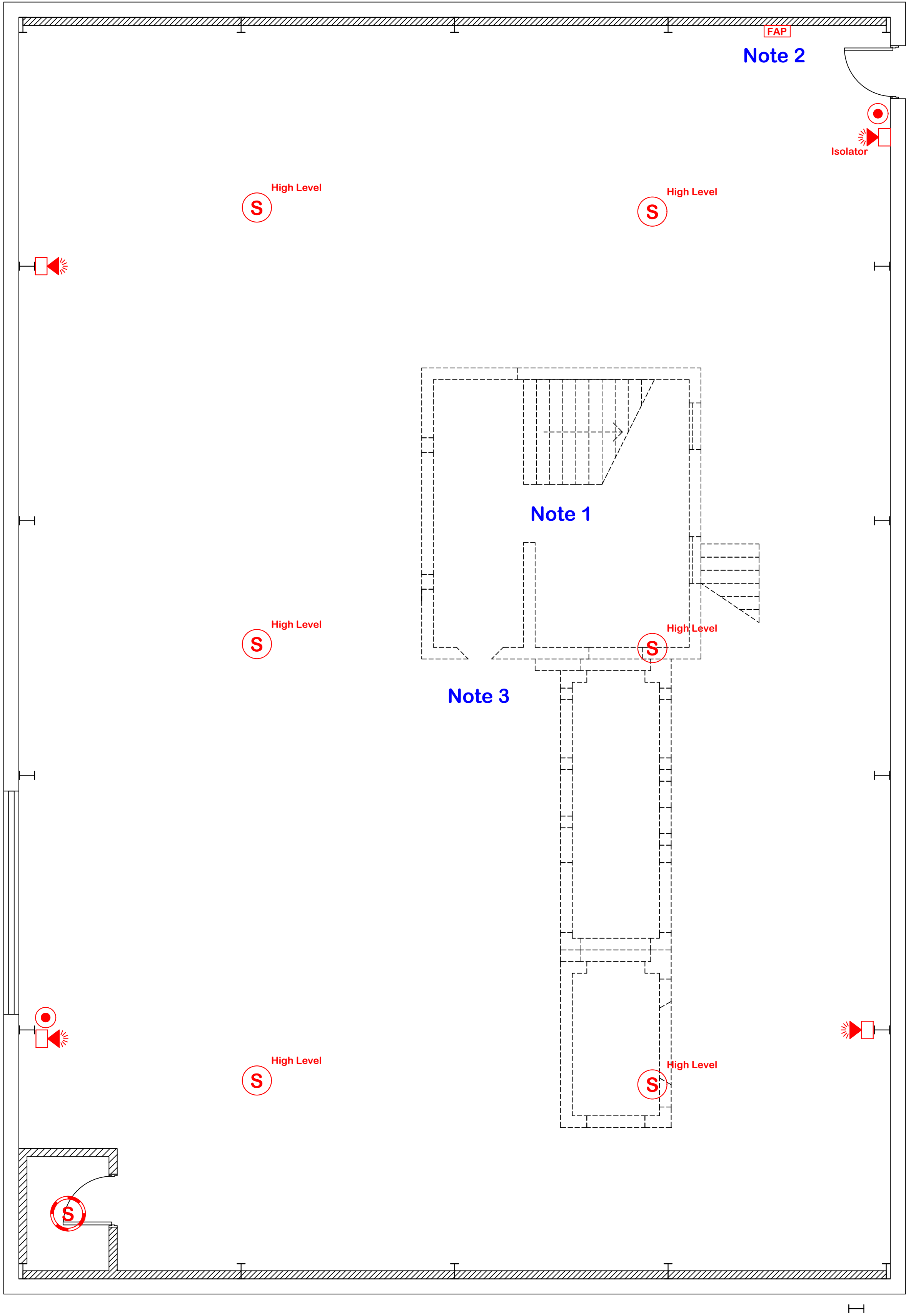
SAMPLE/2005/07/FA200

Revision: [ ] [ ] [ ] [ ] [ ] [ ] [ ] [ ] [ ] [ ]

Note 1:  
Allow 4 off Fire Alarm Sounders within  
Training Rig.  
Exact positions to be agreed on site.

Note 2:  
Fire Alarm Indicator Control Panel to be supplied  
with "Key Operated" Isolation Facility to facilitate  
the isolation of the buildings Automatic Fire  
Detectors.

Note 3:  
Allow 1 off "Mains Rated" Loop Interface for Test Rig  
Plant Control Interfacing.

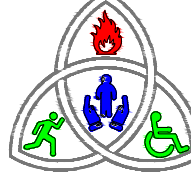


© This drawing and/or design is the property of 'LIFE SAFETY SYSTEMS' and shall not be reproduced or copied in the whole or part in any way or conveyed to a third party without the owners written permission.

- NOTES:
- Fire Alarm**
  - FAP** Indicator Control Panel
  - RFAP** Repeater Indicator Control Panel
  - S** Smoke Detector/Sensor
  - H** Heat Detector/Sensor
  - S/H** Combined Smoke/Heat Detector/Sensor
  - Detector/Sensor Mounted Base Sounder
  - Manual Call Point
  - ◻** Alarm Sounder
  - ◻** Combined Sounder/Visual Indicator Unit
  - ☀** Visual Indicator Unit
  - ☂** Alarm Bell
  - R** Sensor/Detector Remote Visual Indicator
  - ?** Interface (Letter Denotes Type)
  - ⊗** Miscellaneous Unit/Interface
  - ↑ Tx** Beam Detector Transmitter Unit
  - ↓ Rx** Beam Detector Receiver Unit

Revision	Description	Date	Checked
----------	-------------	------	---------

**AMENDMENT RECORD**



**LIFE SAFETY SYSTEMS**  
DESIGN & DRAFTING SERVICES  
4 HERMITAGE CLOSE THREE LEGGED CROSS  
WIMBORNE DORSET BH21 8QA  
Tel: 07835 742200  
Email: autocad\_drawings@btinternet.com

Project:  
**Hampshire Fire & Rescue HQ  
Leigh Road  
Eastleigh  
Hampshire**

Title:  
**Proposed  
Fire Alarm Alterations / Upgrade  
New Training Rig Building**

Drawn By: <b>ISW</b>	Date: <b>NOV 05</b>
Checked By:	Date:
Scale @ A1: <b>1:50</b>	Date: <b>NOV 05</b>
Drawing Number: <b>SAMPLE/2005/11/FA300</b>	
Revision:	

© This drawing and/or design is the property of 'LIFE SAFETY SYSTEMS' and shall not be reproduced or copied in the whole or part in any way or conveyed to a third party without the owners written permission.

NOTES:

Fire Alarm

FAP

Indicator Control Panel

RFAP

Repeater Indicator Control Panel

S

Smoke Detector/Sensor

H

Heat Detector/Sensor

S/H

Combined Smoke/Heat Detector/Sensor

Detector/Sensor Mounted Base Sounder

Manual Call Point

Alarm Sounder

Combined Sounder/Visual Indicator Unit

Visual Indicator Unit

Alarm Bell

R

Sensor/Detector Remote Visual Indicator

?

Interface (Letter Denotes Type)

X

Miscellaneous Unit/Interface

Tx

Beam Detector Transmitter Unit

Rx

Beam Detector Receiver Unit

Revision	Description	Date	Checked

AMENDMENT RECORD

LIFE SAFETY SYSTEMS

DESIGN & DRAFTING SERVICES

4 HERMITAGE CLOSE    THREE LEGGED CROSS  
WIMBORNE    DORSET    BH21 6QA  
Tel: 07835 742200  
Email: autocad\_drawings@btinternet.com

Project:

Hampshire Fire & Rescue HQ  
Leigh Road  
Eastleigh  
Hampshire

Title:

Proposed  
Fire Alarm Alterations / Upgrade  
New Garage Building

Drawn By:	Date:
ISW	JUN 06
Checked By:	Date:
Scale @ A1:	Date:
1:50	JUN 06

Drawing Number:

SAMPLE/2005/11/FA400

Revision:									
-----------	--	--	--	--	--	--	--	--	--

